

**FEATURES:-**

- 5 Digit LCD Display of Total Volume.
- Easy reset total button on front panel or optionally via internal reset.
- Ideal for pulse flowmeters requiring additional large display reset of total.
- Power options: Internal Lithium battery with up to 10 year life span or Externally powered 240 VAC or 5 - 25 VDC models.
- Pulse output option for dataloggers / PLC's.
- IP65 wall mountable enclosure with flip up lid to protect LCD..
- User friendly and fully programmable functionality.
- Maximum ambient Temperature 55 °C.
- Made in Australia by ManuFlo.



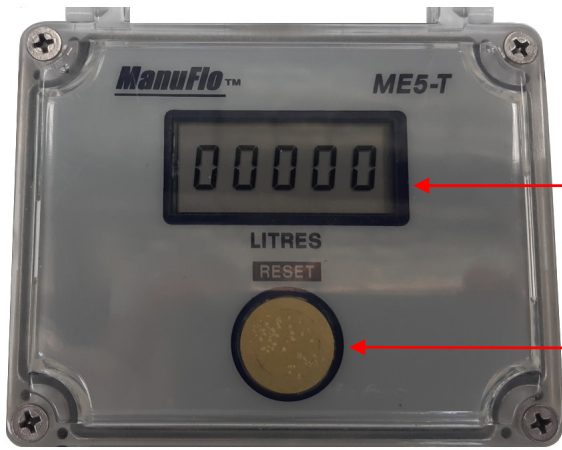
The **ME5-T** digital indicator is designed to operate with a wide range of pulse/signal output or coil output flowmeters, providing a resettable Volume Total display in chosen engineering units. To reset the Total simply push the front panel button once. This button also brings the unit out of 'dormancy' a function that preserves battery usage when not in operation.

Power is via either: an internal Lithium battery which has a typical life of up to 10 years or optional external 5-25 VDC, or 240 vac. The **ME5-T** will accept flowmeter input pulses up to 2000 Hz.

The ME5-T is housed in a compact IP65 Polycarbonate enclosure with molded mounts, which allows it to be used in a wide range of field applications. All application parameters are pre-programmed according to customer requirements, including display unit preferences and flowmeter K-factor. Scaling can be recalibrated in situ if necessary, using the internal operator buttons.

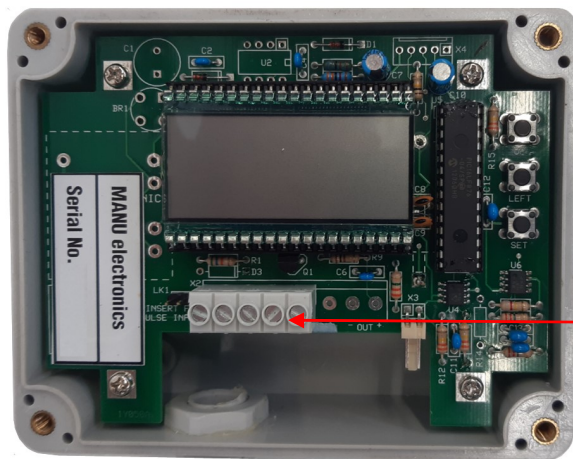
**SPECIFICATIONS****ME5-T**

<b>Display Type</b>	LCD
<b>Display Readout Total</b>	5 digits (10mm x 5mm) up to 2 decimal places. Units available in Millilitres, Litres, Kilolitres or Megalitres
<b>Programming</b>	menu driven by 3 internal push buttons
<b>Power Supply Options</b>	Option 1: 3.6v replaceable lithium battery (typically in excess of 10 year life) Option 2: 240 VAC or Option 3: +5 to 25 VDC
<b>Display Housing Ingress</b>	IP66 waterproof, Sealed Polycarbonate enclosure with hinged lid and 4 x 316 stainless steel screws for access to programming and wiring terminals.
<b>Max. Ambient Temperature</b>	55 °C
<b>Pulse Input (compatibility)</b>	All square waveforms and Voltage free switching 0.2 to 2,000 Hz (note: minimum 2Hz is required for stable flow rate readings)
<b>Pulse Output</b>	<ul style="list-style-type: none"> <li>• Non-isolated 5-25 VDC. Maximum 100Hz, 100mA. 5ms fixed pulse width.</li> </ul> Note: Pulse Output is optional for battery units, and standard for other models.
<b>Enclosure Dimensions:</b>	95mm (H) x 120mm (W) x 60mm (D) Fastening lugs with 127mm apart from centers
<b>Electrical Connection</b>	One or two IP67 cable gland entries, screwed clamp wired terminals
<b>Weight (unpacked)</b>	0.4 kg



5 Digit LCD Counter

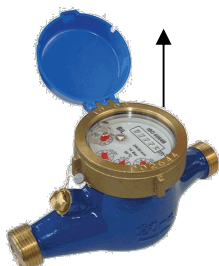
Total Rest Button



Programme Buttons

Wiring Terminals

Examples of Pulse output flowmeters connected to ME5T to obtain large LCD resettable remote display:-



MEH-R 1p/1 Ltr.



PSM 1p/5 ltrs.



WPD 1p/10 ltrs.



RPFS-

L/SC63 11.7p/1 Ltr.

**ORDERING INFORMATION**

**ME5-T TOTALISER LCD Indicator – Product Order Codes**

ME5 – T	– power	– pulse	– No. of decimal places	– units
Battery (without pulse output)	= B		0	ML = Millilitres
Battery (with pulse output)	= B	P	1	L = Litres
External DC power (pulse output included)	= D	P	2	KL = Kilolitres
External AC power (pulse output included)	= A	P		M = Megalitres

e.g. "ME5-T-B-1-L" is ME5-T Totaliser, internal battery powered, with display to 1 decimal place showing Litres

**Footnote:** ME5-T-A (AC powered version) cannot be used with 24vdc Magnetic Flowmeters, instead procure separate 240-24vdc power adaptor and / or use with ME5-T-D (24vDC powered version).

\* Refer Separate Instruction manual for wiring and Programming of ME5-T.